

# Welcome to *The Planning Exchange*



TRANSPORTATION PLANNING INFORMATION EXCHANGE

# UNDERSTANDING THE LINKS BETWEEN TRANSPORTATION AND HEALTH: CASE STUDIES FROM THE FIELD

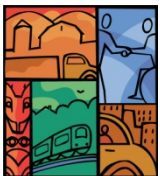
Ellen Zavisca, Knoxville (TN) TPO

*Getting Your MPO Engaged in Policy Work*



# The three P's

- Program: go take a walk!
- Project: building a trail where people can walk
- Policy: requiring walkability in development/ redevelopment

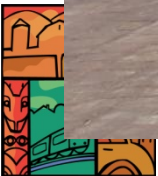


# The three P's

- Program: go take a walk!
- Project: building a trail where people can walk
- Policy: requiring walkability in development/ redevelopment



# A story from the field



## 2 key lessons

- Working on projects and programs
  - often reveals need for policies
  - creates relationships and trust that facilitate policy work



# Other policy areas for MPOs

- Complete streets/routine accommodation for active transportation
  - At multiple levels: local, regional, state
- Local development regulations
- Health policy, such as through a community health council
- Vision Zero and other efforts to reduce traffic fatalities




# Benefits of policy focus

- Saves time & effort – once the policy is in place
- Greater equity of outcomes



SECTIONS Search... NEWS SENTINEL PART OF THE USA TODAY NETWORK


## West Hills neighborhood wants sidewalks



ADAM LAU/NEWS SENTINEL Katie Neely, left, picks up her children Davis Neely, 8, and Annie Neely, 6, from left, at the bus stop at Wesley Road and Haverhill Dr. on Friday, April 8, 2016. A group of West Hills residents are rallying for a sidewalk on Sheffield Dr. through their neighborhood, saying it would allow students at West Hills Elementary School to walk home safely.

Posted: April 11, 2016  
2 Comments

SHARE f t e



West Hills resident Anna Crais, center, talks

By Gerald Witt of the Knoxville News Sentinel

Sandy Robinson said her West Hills neighborhood is covered by sidewalks in pedestrian-heavy areas, except for one stretch of Sheffield Drive.

"It's a whole loop; you're missing that one walkway to close that loop," Robinson said.

She's planning on joining a community drive to highlight the lack of a sidewalk on a two-block stretch.

"We're the only street that's not connected, and ours is like a main thoroughfare," she said.



# Challenges of policy focus

- It takes lots of time
- Requires bringing along multiple partners
- *“Politics is a strong and slow boring of hard boards” – Max Weber*

