



MoDOT Partner Coordination

Missouri Department of Transportation

Karen Miller

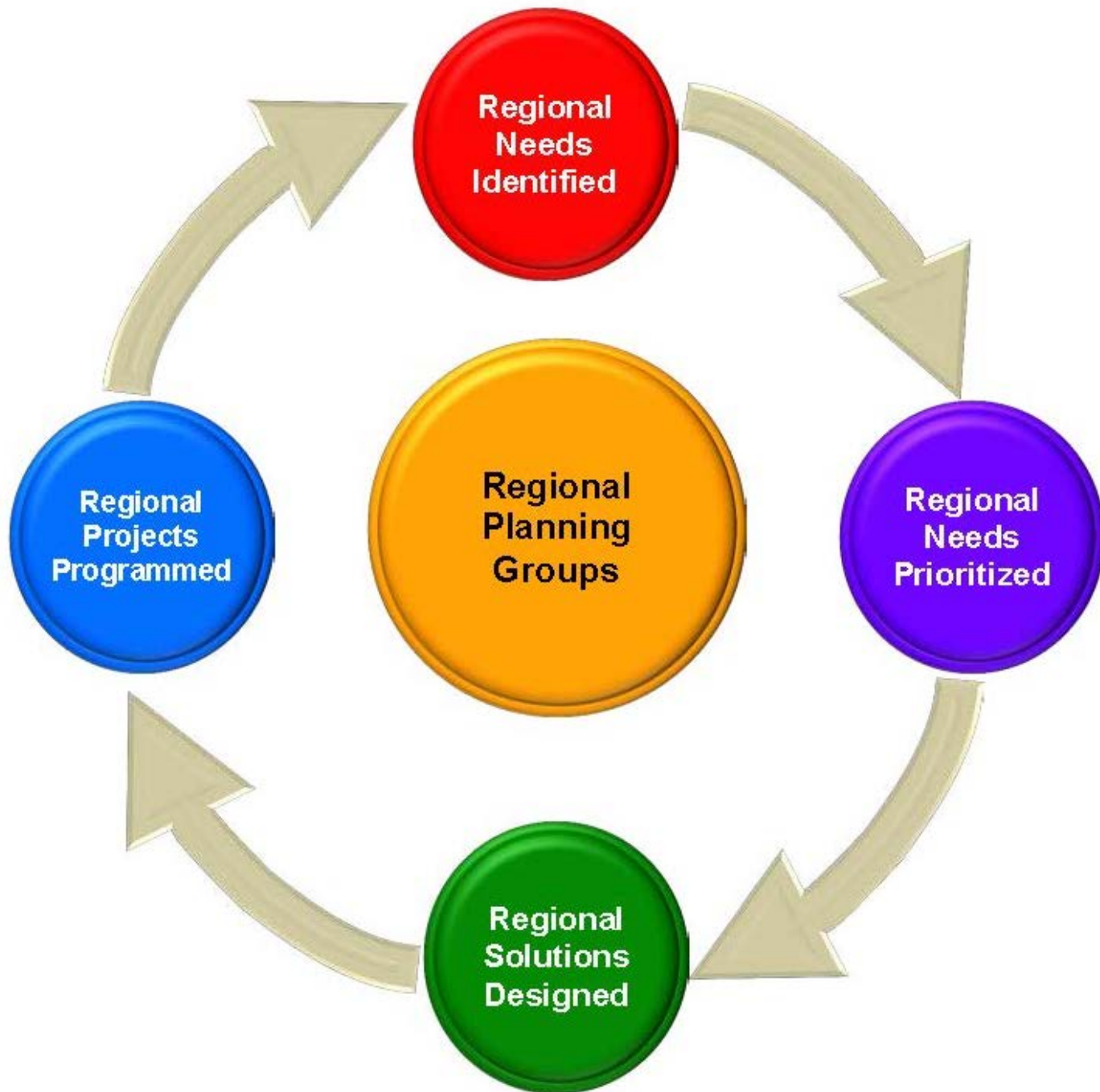
January 25, 2018

Who is MoDOT?



- Ranked 7th nationally in state highway miles
 - 34,000 center line miles
 - 10,400 bridges
- Divided into 7 districts
- 9 MPOs
 - 4 TMAs
 - 5 bi-state MPOs
- 19 Regional Planning Commissions

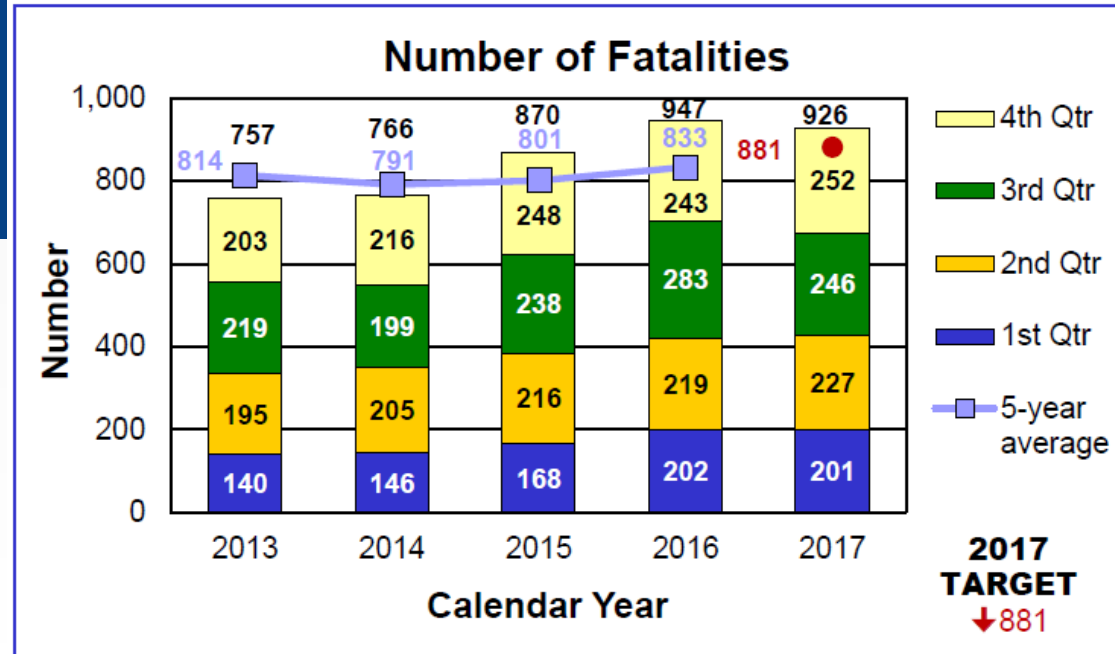






Tracker

MEASURES OF DEPARTMENTAL PERFORMANCE



Missouri Department of
TRANSPORTATION



888-ASK MoDOT (275-6834)



TRAFFIC



SAFETY



PLANNING



BRIDGE



DESIGN



MAP-21



CONSTRUCTION



MULTIMODAL



COORDINATION

PLANNING

PERFORMANCE

DATA

Collaboration Website



Home

FAST Act/MAP-21 Performance Management

Welcome to the Missouri Department of Transportation's FAST Act/MAP-21 collaboration site dedicated to performance management. Please share any resources you find helpful in the implementation of the national performance-based planning and programming requirements. MoDOT values your partnership as we collaborate together.

Shared Documents

[+](#) New [↑](#) Upload [↻](#) Sync [↻](#) Share [More](#) ▾

Current View [...](#) [🔍](#)

✓	📄	Name	Modified	Modified By
	📁	Final Rules	... March 15, 2016	■ Karen S. Miller
	📁	Monthly Conference Calls	... March 2, 2015	■ Karen S. Miller
	📁	Performance Examples	... April 22, 2015	■ Karen S. Miller
	📁	Presentations_Webinars_Meetings	... March 24, 2017	■ Karen S. Miller
	📄	Draft MoDOT FAST Act_MAP-21 Implementation Matrix	... Yesterday at 9:23 AM	■ Karen S. Miller
	📄	FHWA Implementation Timeline	... November 21, 2017	■ Karen S. Miller
	📄	MoDOT FAST Act MAP-21 Performance Measures	... Yesterday at 1:22 PM	■ Karen S. Miller
	📄	Rulemakings_FAST Act_MAP-21_Timeline	... October 25, 2017	■ Karen S. Miller

Drag files here to upload

Links

- ▣ [TPM - FHWA MAP-21](#)
- ▣ [AASHTO TPM](#)
- ▣ [CATT Lab Resources](#)
- ▣ [FHWA Performance Based Planning and Programming](#)
- ▣ [Transportation Planning Capacity Building](#)
- ▣ [MoDOT Tracker](#)
- ▣ [FTA](#)
- ▣ [Federal Register](#)
- ▣ [Where to post comments](#)

[+ Add new link](#)

Collaboration Partners



- MPOs
- Regional Planning Commissions
- Arkansas, Illinois, Kansas, Missouri DOT
- FHWA local division staff from Arkansas, Illinois, Kansas, Missouri
- FTA local division staff from Arkansas, Illinois, Kansas, Missouri
- Applicable Subject Matter Experts



Topics/ Training



- NPRMs and Final Rules
- MPO examples of Performance Based Planning and Programming, and Performance Management
- FHWA, FTA, AASHTO, AMPO, APTA and State FAST Act Implementation Tools
- FHWA Pilot Trainings, Webinars, Resources
- Target Setting Coordination – Transit, Safety
- FHWA/ FTA Planning Agreement

Implementation Matrix



Who	Area	Performance Measure Targets	Where	By When
Transit Agency	Transit	Percentage of Vehicles that have met or exceeded their ULB	Documented	January 1, 2017
		Percentage of Revenue Vehicles within a particular asset class that have met or exceeded their ULB		
		Percentage of Guideway Directional Route Miles with Performance Restrictions by Class		
		Percentage of Facilities with a Condition Rating below 3.0 on a FTA TERM Scale (5 being excellent)		
State DOT	Safety	Number of Fatalities	HSP	July 1, 2017
		Rate of Fatalities per 100 million VMT	HSIP	August 31, 2017
		Number of Serious Injuries		
		Rate of Serious Injuries per 100 million VMT		
		Number of Non-Motorized Fatalities and Non-Motorized Serious Injuries		
MPO	Safety	Number of Fatalities	Report to	February 27, 2018
		Rate of Fatalities per 100 million VMT	State DOT	
		Number of Serious Injuries		
		Rate of Serious Injuries per 100 million VMT		
		Number of Non-Motorized Fatalities and Non-Motorized Serious Injuries		

TPM Timeline Tool



Performance Management Timeline

Step 1. Get Started

Step 2. View Timeline

Step 3. View Table

Learn More

TPM

Home

Basic Filters

Advanced

Apply Filter

Who

MPO

State DOT

Tier I Transit Agency

Tier II Transit Agency

Rule

HSIP & Safety

Performance Measures (PM1)

Bridge & Pavement

Performance Measures (PM2)

System Performance

Measures (PM3)

Transit Asset Management

Asset Management Plan

State Freight Plan

Planning

Functional Area (By Rule)

Transportation Safety

Bridge

Pavement

Highway Reliability

Truck Freight Reliability

CMAQ Traffic Congestion

The Performance Management Timeline Tool is a web-based interactive tool for State DOTs, MPOs and transit agencies to visualize the requirements established by the federal rules that implement the MAP-21 and FAST Act – reflecting the milestones and deadlines for the rules that are final as of July, 2017. While several of the deadline items are set on a fixed date by the rules, others are dependent upon agency-specific cycles.

Please start with the **User Guide** to understand how to use the tool.

Next, please answer the following questions as they apply to your agency. Note that if you do not answer them, default values will be used to fill input-dependent deadlines.

Role *

MPO

State DOT

Tier I Transit Agency

Tier II Transit Agency

When did/does your 2017 Fiscal year end?

2017-12-31

When was your last LRTP approved?

2014-06-01

How often is your LRTP updated? (in number of years)

5

When was your last STIP approved?

2015-06-01

How often is your STIP updated? (in number of years)

3

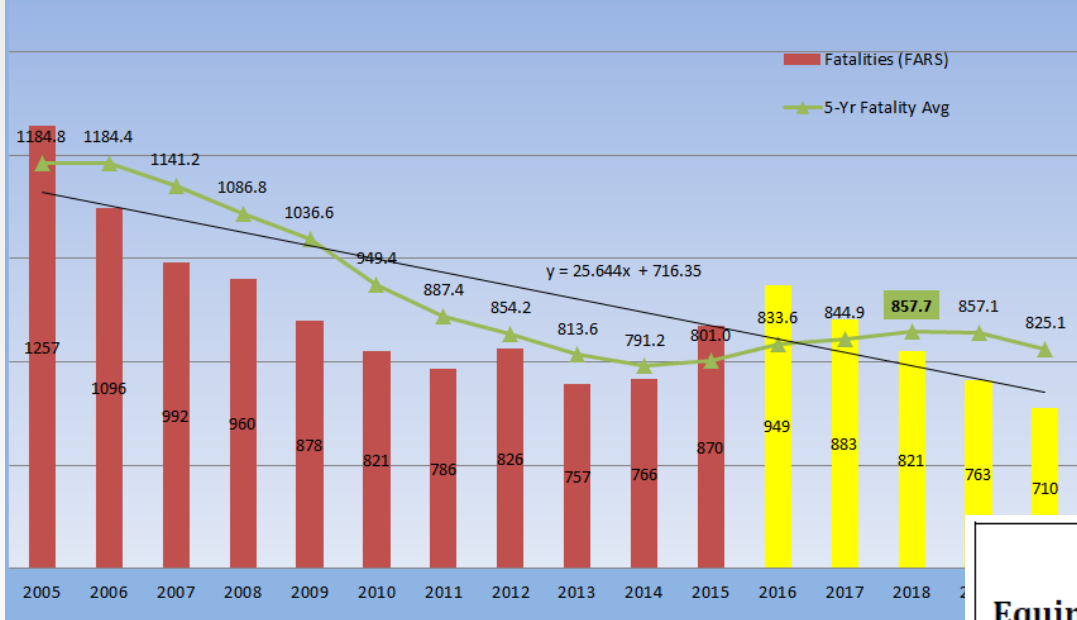
Save User Settings

Reset

Target Setting Coordination



Annual Fatalities and 5-Year Average Fatalities



Equipment	State TAM Plan initial TARGETS (% met or exceeded FTA ULB Benchmarks)
Non-revenue support-service and maintenance vehicles (exceeding \$50,000 at purchase)	50%
Rolling Stock	
<i>Revenue vehicles by mode</i>	
VN, AO, MV (8 year ULB)	50%
CU (10 year ULB)	50%
BU, BS (14 year ULB)	50%

New Planning Agreement



- Due May 27, 2018
- DOTs, MPOs, transit agencies agree how to:
 - Share transportation performance data
 - Select performance targets
 - Report performance targets
 - Report performance
 - Collect NHS data for State TAMP Plan

What Can I Do?



- Reach out
- Build relationships
- Get connected
 - AASHTO
 - AMPO
 - APTA
 - FHWA TPM website

What's Needed?



- Coordination
- Flexibility
- Everyone on the same page
- Timely resources